

INDIAN OFFICE.

FILES.

CAUTION!

Positively no papers to be added to or taken from this file, except by an employee of the Mails and Files Division.

By order of

E. B. MERITT,

Asst. Commissioner.

0-4344

58243-
, 1916.

CARLISLE

File No.

916

Education-
J F Jr.

58243

MAY 20 1916

FILED BY G. P. F.

Mr. Leo Marks,
Teacher of Agriculture.

(Through Superintendent, Carlisle School)

My dear Mr. Marks:

I have received your letter of May 5, enclosing blue prints of the two school farms indicating their acreage and the rotation maintained during the years noted.

I am glad to see from the record that some care as to rotation of crops has been heretofore taken. I cannot but fear that the best advantage has not been taken of the farming and gardening opportunities at Carlisle, and it is my hope that a new farmer may be obtained who will give his most earnest consideration to bringing about real improvement in this respect.

I am glad to know that all the oats and onions are in, that the early potatoes are being planted and that the truck fields and corn fields are under preparation. It is not only necessary that the fields be properly tilled

J.F.

INITIALING COPY - FOR FILE

but that the several crops be seeded and planted in the proper season. Plans must be matured in advance and arrangements made to get crops in at the proper time if a farmer seeks bountiful return. Delay in planting, cultivating or harvesting is reflected in the crop produced. In a large institution where divided responsibility will easily arise it is essential that there be a careful organization which will place the responsibility for various agricultural operations definitely.

I note with great appreciation the attention given by yourself to the dairy and the economical and intelligent feeding of the cattle. On this more than anything else the value of the herd as an asset of the school must depend.

A request is receiving consideration for the purchase of additional milch cows. Undoubtedly there are not a sufficient number of cows in the dairy at this time for the needs of Carlisle, but with the increase in the size of the herd economical and intelligent management will become more and more necessary.

The number of hens shown in your inventory of live stock is of course too small to furnish the poultry and eggs necessary in an institution of the size of Carlisle.

Attention to poultry raising, however, on a large scale is a matter of comparatively recent date, but in the future I am hoping for a steady growth with a view to reaching a sufficient number of hens to furnish all the eggs and chickens necessary for the use of the school.

Upon examination I believe that the crop rotation is in line with the better authorities and the practice observed in regions having soils similar to that of the Carlisle locality.

I wish to express to you my appreciation of your interest in these matters and to hope that as soon as a farmer is appointed you will give your most cordial cooperation in bringing about a very high standard of agricultural operations at Carlisle.

Very truly yours,

(Signed) Cato Sells
Commissioner.

5-EO-18


 DEPARTMENT OF THE INTERIOR
 UNITED STATES INDIAN SCHOOL

CARLISLE, PA.

Hon. Cato Sells
 Commissioner of Indian Affairs
 Washington, D. C.

FILED BY C. P. F.



Dear Mr. Sells:

In accordance with your special request I am forwarding under separate cover maps of the two school farms marked as to the rotation maintained and the acreages. Attached you will also find an inventory of livestock as requested.

The work has been pushed steadily since your visit and results will soon be noted. All oats and onions are in. Early potatoes are being planted at present. The truck fields and corn fields are under preparation.

Mr. Meyer and myself are at present considering the best locations for permanent cow and hog pastures which are badly needed at once.

I have been devoting considerable attention at odd moments to the Dairy which is in a very run down condition. The cows I found were receiving an extremely heavy and costly unbalanced ration, which in some way accounts for their condition, by balancing the ration with the feeds on hand, I figure a saving will be made of at least \$500. per year year with only the present number of livestock and that the health and production of the animals will be improved.

Have also succeeded in disposing of considerable



DEPARTMENT OF THE INTERIOR
UNITED STATES INDIAN SCHOOL

CARLISLE, PA.

Hon. Cato Sells.

Sheet #

surplus corn fodder to a neighboring farmer at
 a very good price.

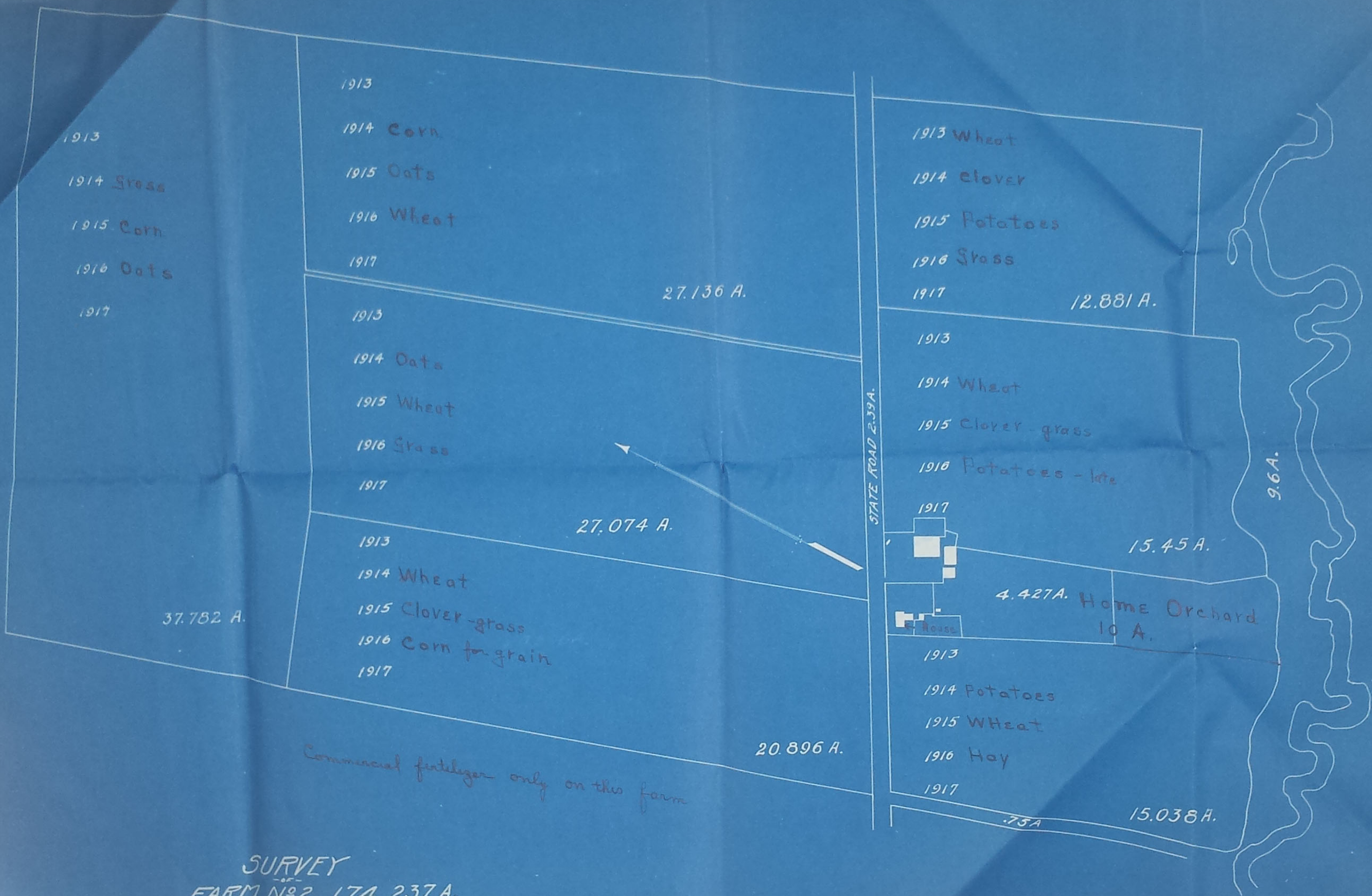
Some headway has been made in the cow yard
 and when teams are available the work will be rushed.

Inventory livestock both farms:

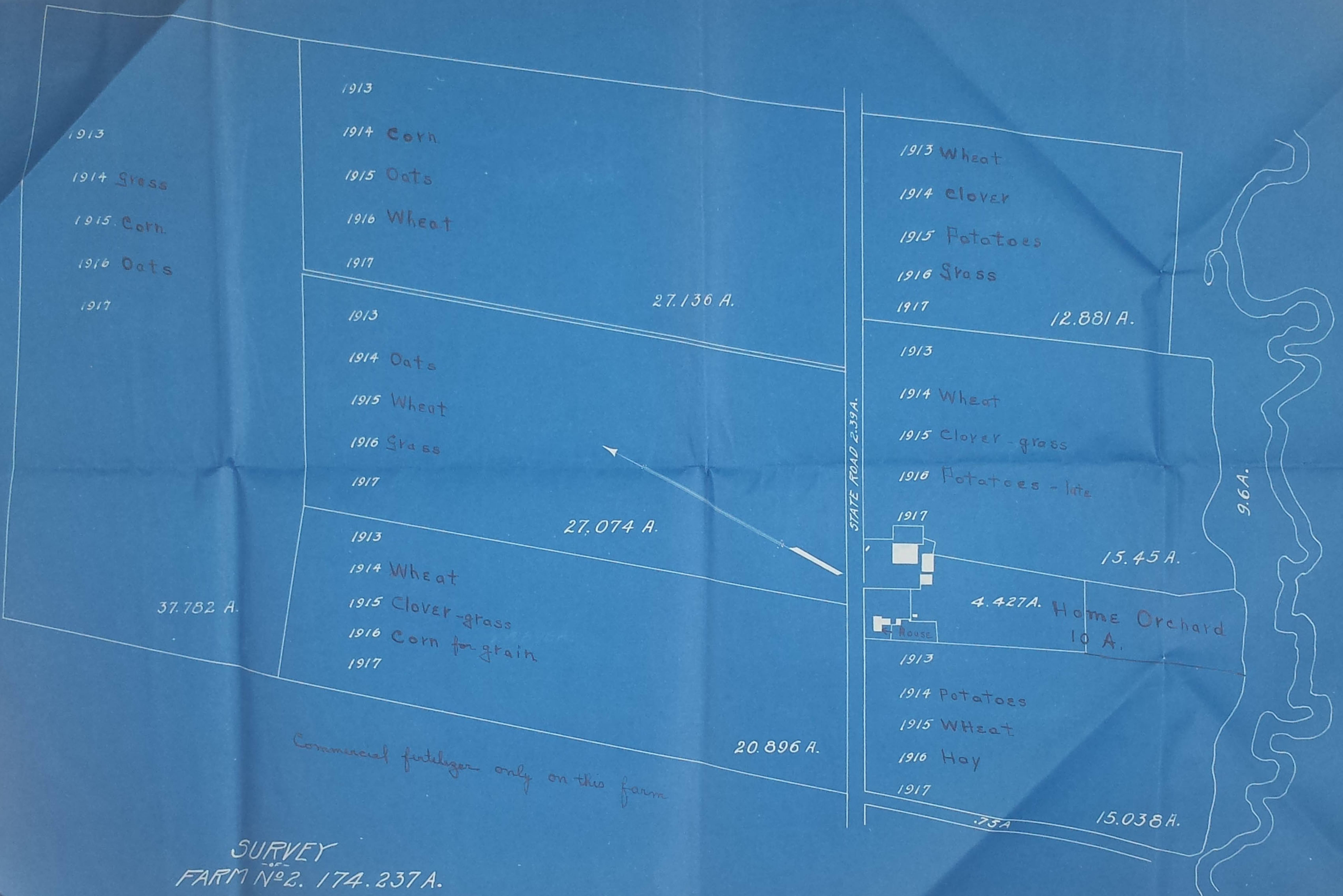
Milch cows	11	-	See 50678-16-
Heifers	10		
Calves	6		
Bulls mature	1	-	purched
Bull calves	3		
Horses	5		
Mules	10		
Hogs and pig	160		
Hens	175		

Respectfully Submitted:

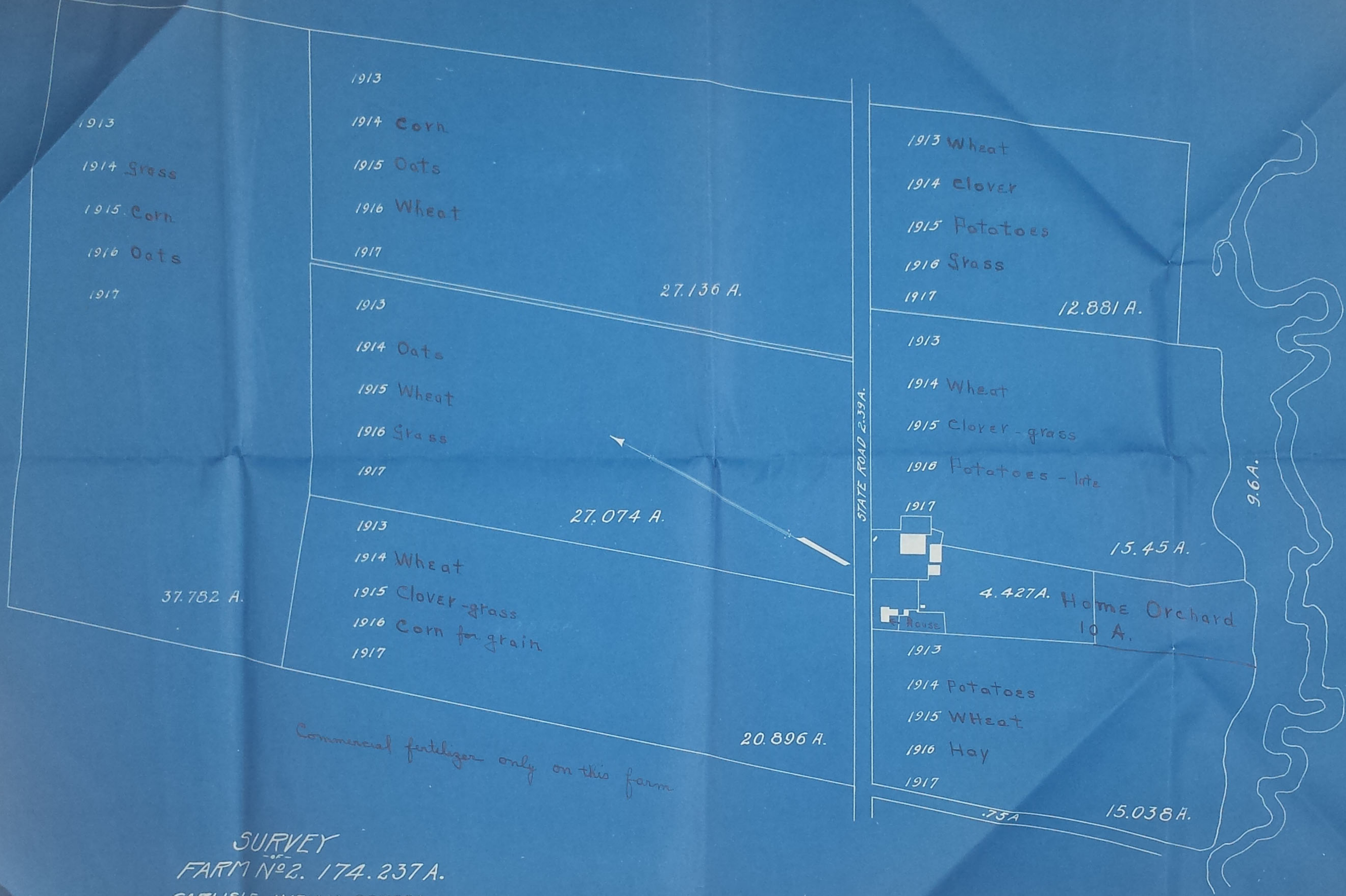
Leo Marke



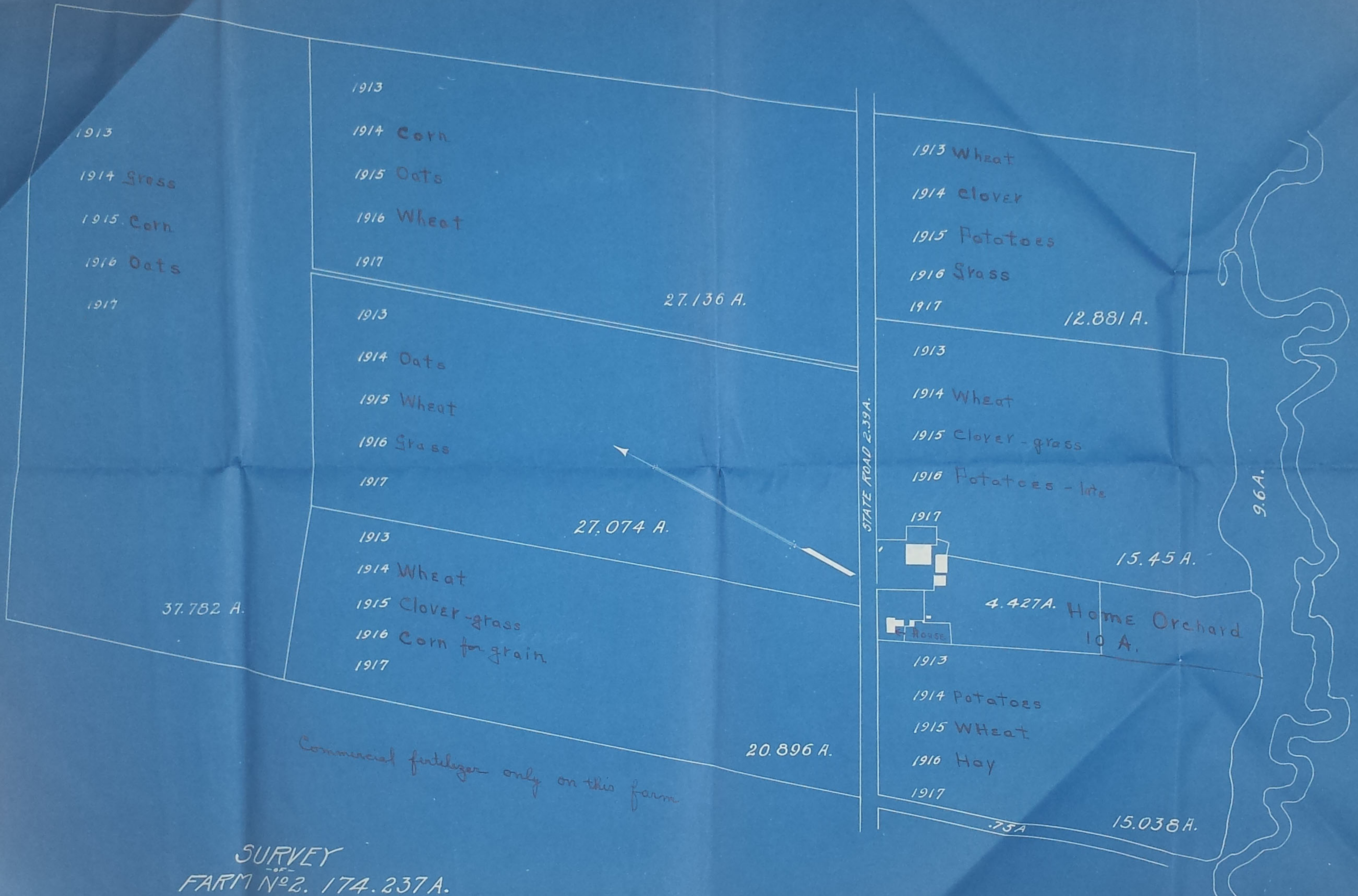
SURVEY
 FARM N^o 2. 174.237 A.
 CARLISLE INDIAN SCHOOL
 CARLISLE, PA.,
 BY M. A. Collins MAY, 1, 1913 M. Friedman, Supt.
 Scale 200' = 1"



SURVEY
 FARM N^o 2. 174.237 A.
 CARLISLE INDIAN SCHOOL
 CARLISLE, PA.,
 BY M. A. Collins MAY, 1, 1913 M. Friedman, Supt.
 Scale 200' = 1"

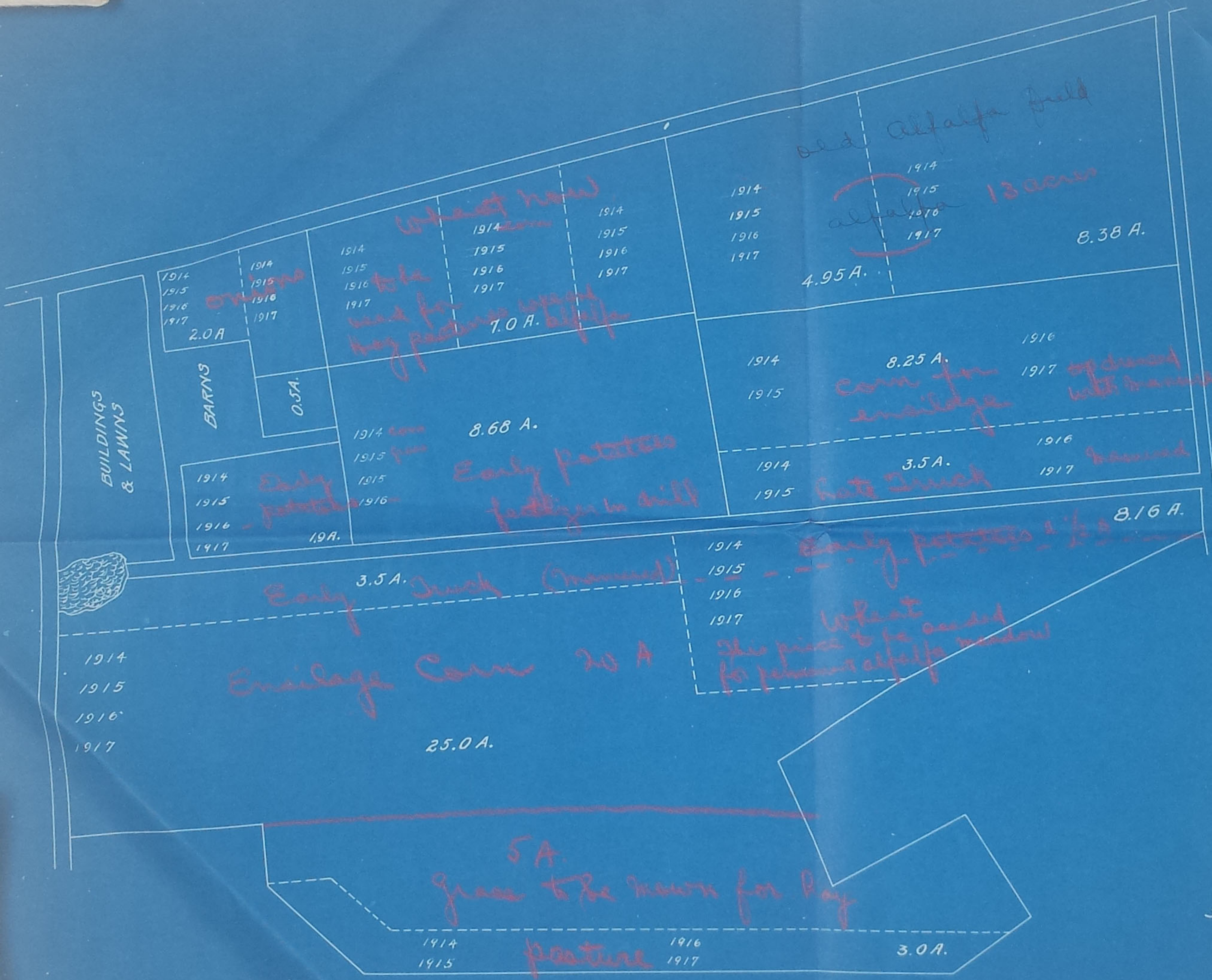


SURVEY
 FARM No. 2. 174.237 A.
 CARLISLE INDIAN SCHOOL
 CARLISLE, PA.,
 BY M.A. Collins MAY, 1, 1913 M. Friedman, Supt.
 Scale 200' = 1"



SURVEY
 FARM No. 2. 174.237A.
 CARLISLE INDIAN SCHOOL
 CARLISLE, PA.,
 BY M.A. Collins MAY, 1, 1913 M. Friedman, Supt.
 Scale 200' = 1"

OFFICE OF INDIAN AFFAIRS
RECEIVED
MAY 27 1916
58243



→ Campus

FARM No 1.
 U.S. INDIAN SCHOOL,
 CARLISLE, PA.
 SCALE 200'=1" 1916

Early potato
fertilizer in drill

1914

3.5 A.

1916

manured

1915

late truck

→ Campus

Truck (manured)

1914

Early potatoes 2 1/2 A

8.16 A.

1915

1916

1917

Wheat

This piece to be seeded
for permanent alfalfa meadow

Corn 20 A

25.0 A.

FARM No 1.

U.S. INDIAN SCHOOL,

CARLISLE, PA.

SCALE 200' = 1"

1916

5 A.

grass to be mown for hay

1914

1915

pasture

1916

1917

3.0 A.

BUILDINGS
& LAND

1914	Early potatoes
1915	potatoes
1916	
1917	1.9 A.

1915
1915
1916
Early potatoes
fertilizer in drill

1914	3.5 A.
1915	Late Truck



3.5 A. Early Truck (manured)

1914	Early potatoes 2
1915	
1916	
1917	Wheat This piece to be seeded for permanent alfalfa meadow

1914
1915
1916
1917

Ensilage Corn 20 A

25.0 A.

5 A.

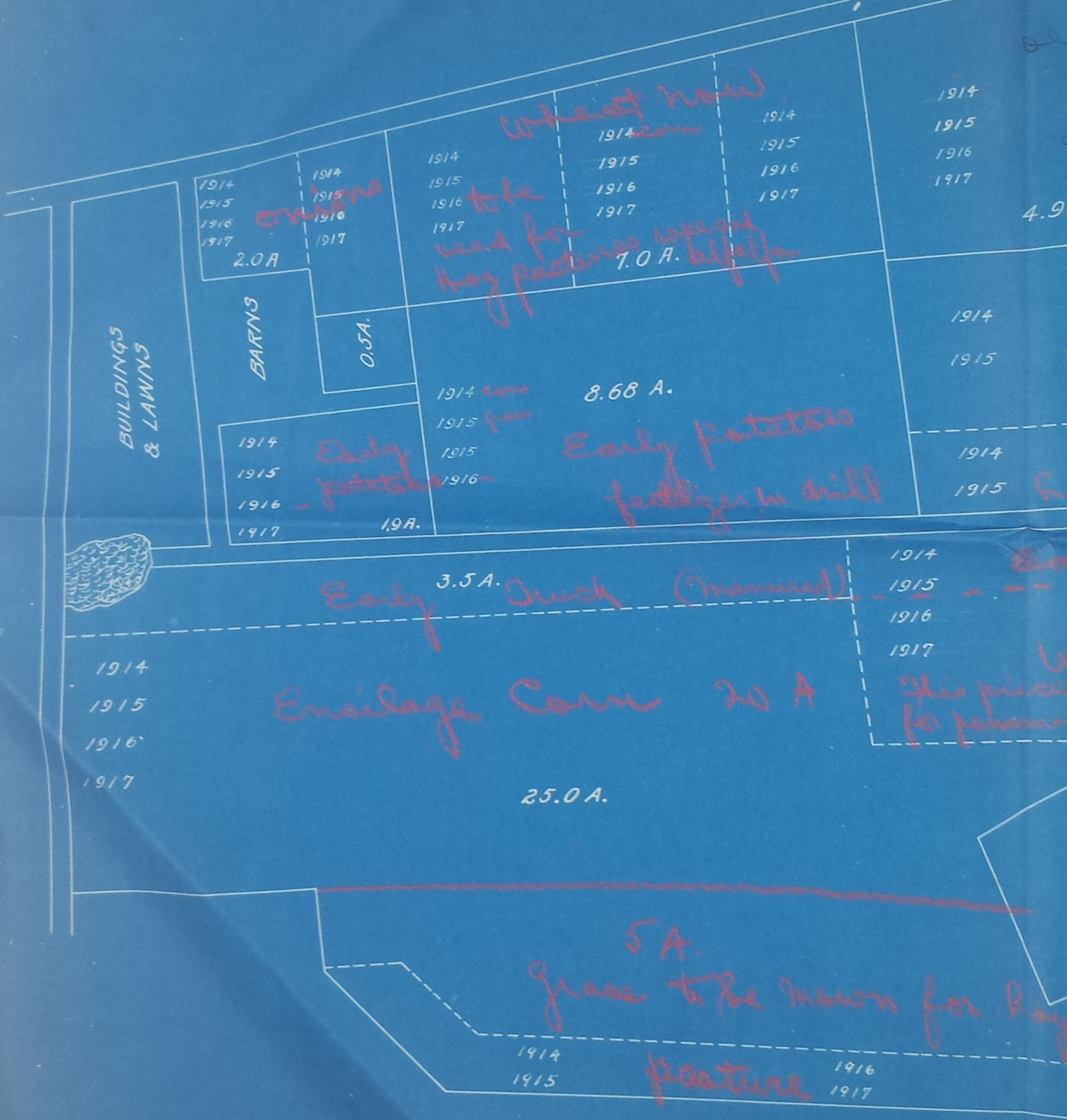
grass to be mown for hay

1914	1916
1915	1917

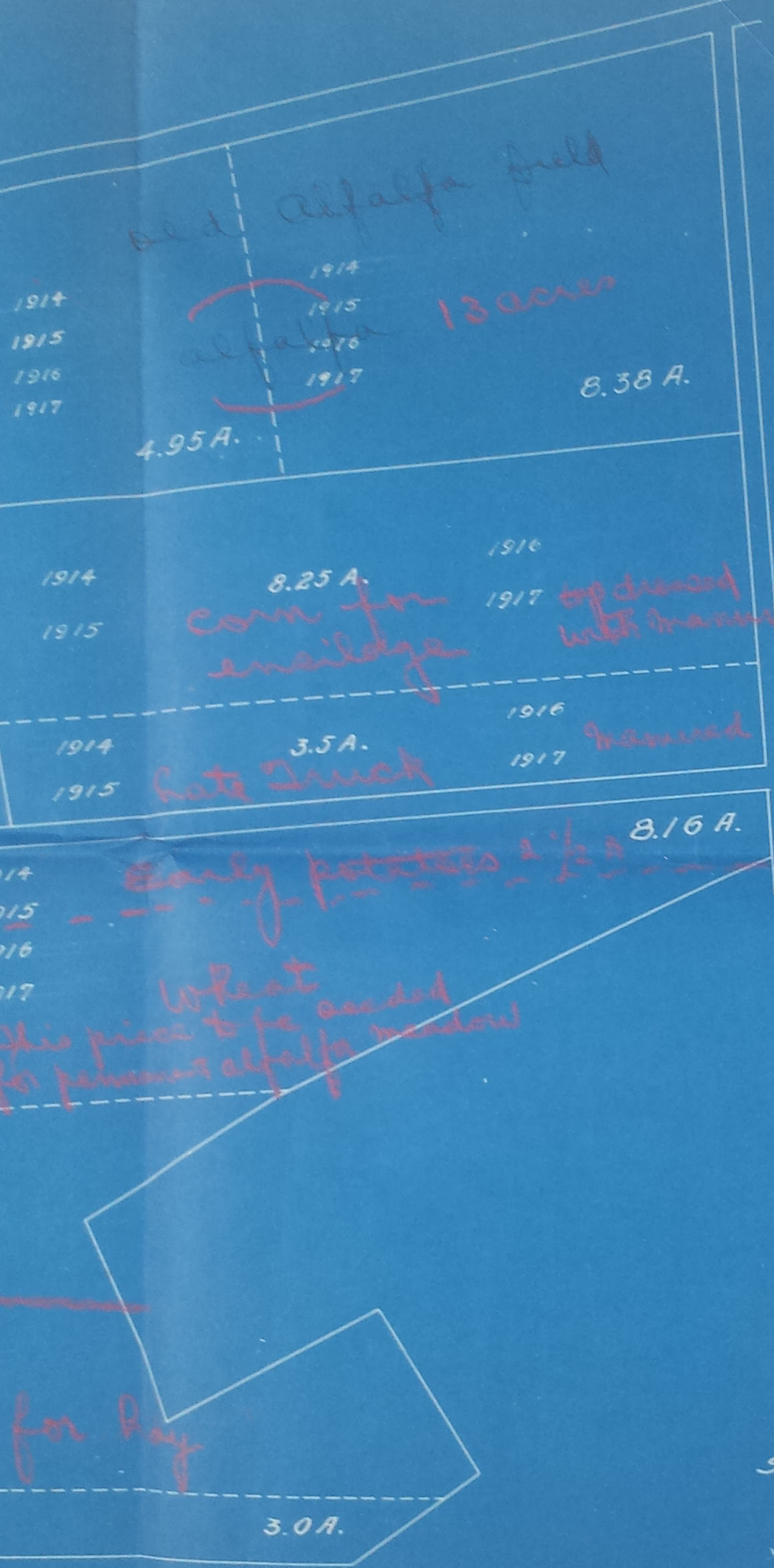
pasture

3.0 A.

BY M.A. COLLINS



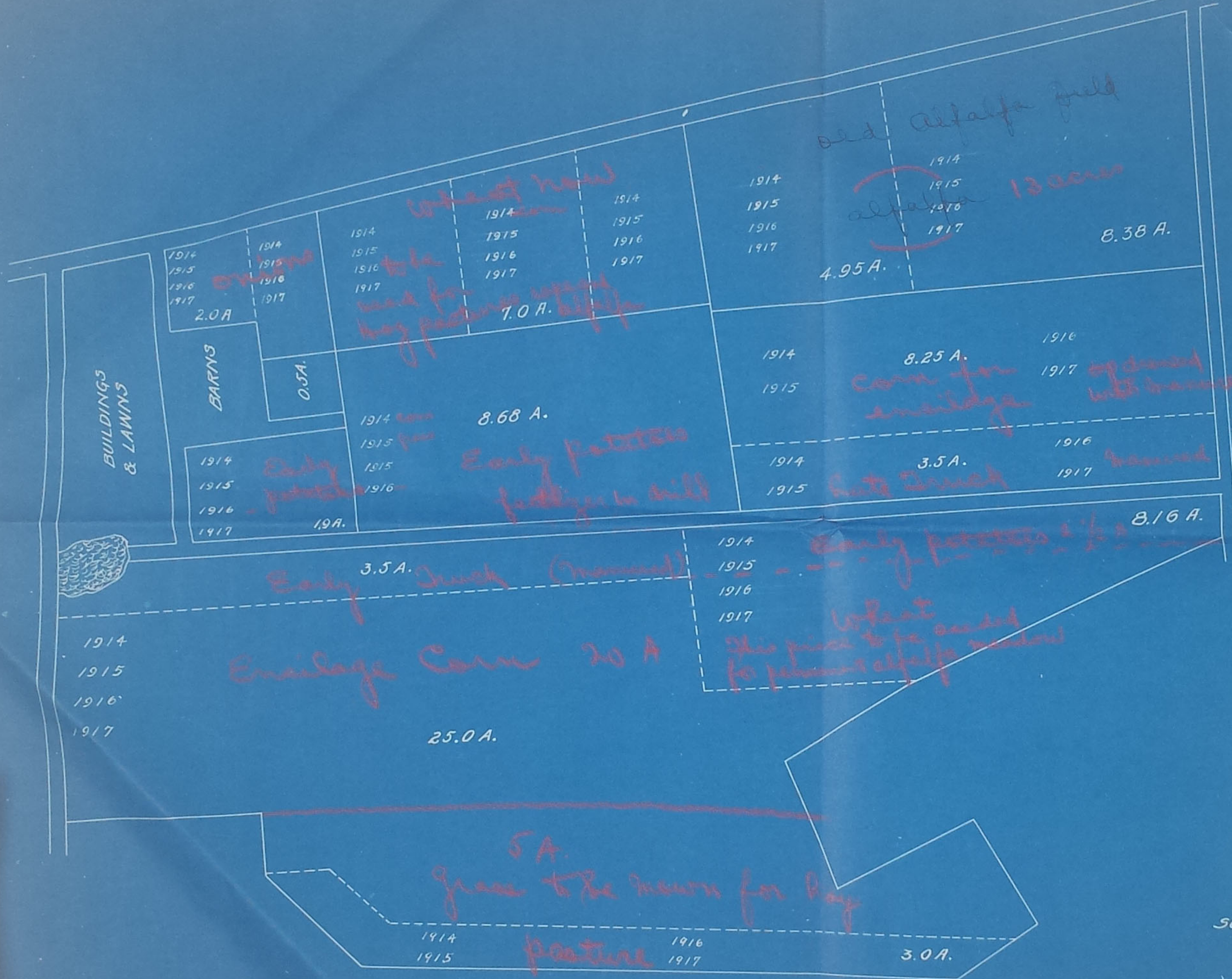
BY M.A. COLLINS



→ Campus

FARM N^o 1.
 U.S. INDIAN SCHOOL,
 CARLISLE, PA.

SCALE 200'=1" 1916

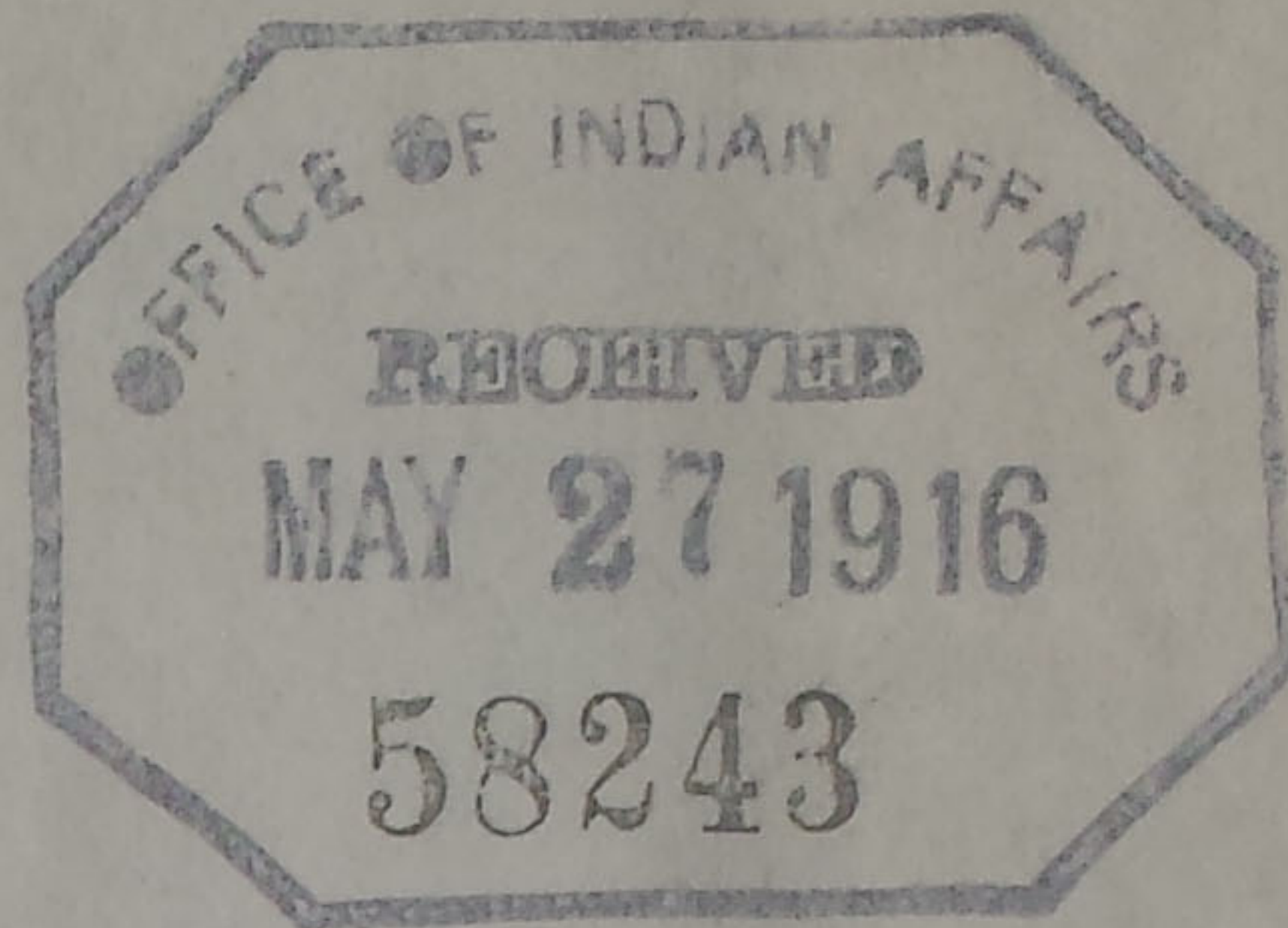


→ Campus

FARM No 1.
 U.S. INDIAN SCHOOL,
 CARLISLE, PA.

SCALE 200'=1" 1916

BY M.A. COLLINS



OFFICE OF INDIAN AFFAIRS

RECEIVED

MAY 27 1916

58243