

Comr.

File

December 17, 1910.

Hon. M. E. Olmsted,

Harrisburg, Pennsylvania. **FOR FILE**

99584
110
Carlisle 229

Indian Appropriation Bill as reported to Senate carries for Carlisle School one hundred sixty-nine thousand dollars and includes words "for transportation of pupils to and from said school".

(Signed) R. G. Valentine,
Commissioner

RES

SEE OTHER SIDE FOR TELEGRAM

The Western Union Telegraph Company

THE LARGEST TELEGRAPHIC SYSTEM IN THE WORLD.
OVER ONE MILLION MILES OF WIRE IN THE UNITED STATES AND CANADA.

It has over 24,000 Telegraph Offices, including Branch Offices.

It has also Direct Connection by Telegraph or Telephone with as many more remote and smaller stations, making a total list of over 50,000 in the United States, Canada and Mexico, and this number is rapidly increasing.

Seven Atlantic Cables,

Connecting North America with all points in Europe and beyond, including Two Cables of the American Telegraph and Cable Company, Four Cables of the Anglo-American Telegraph Company, and One Cable of the Direct United States Cable Co.

Direct Wires to Galveston, Texas, connecting at that place with the Cables of the Mexican, the Central and South American Telegraph Companies for all points in Mexico and Central and South America.

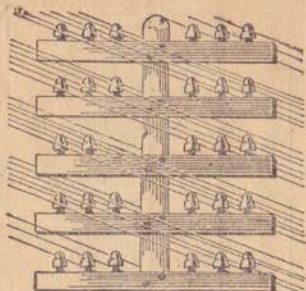
Direct Wires and Cables to Havana, Cuba, connecting at that place with the Cuba Submarine and West India and Panama Telegraph Companies for all points in the West Indies.

Connects at San Francisco with Pacific Cables to the Sandwich Islands, Honolulu, Guam, the Philippines, China, Japan, etc., and at Victoria, B. C., with Pacific Cable to Australia and New Zealand.

Connects at Seattle, Wash., with U. S. Government Lines and Cables to and in Alaska.

Exclusive connection with the Great North-Western Telegraph Co. of Canada.

Domestic and Foreign Money Orders by Telegraph and Cable



THE TWO TELEGRAPH POLES REPRESENT THE RELATIVE SIZE IN NUMBER OF OFFICES OF THE WESTERN UNION AS COMPARED WITH ALL OTHER COMPETING COMPANIES COMBINED



W. U. T. CO.
24,634
OFFICES.

OTHER COES.
4,868
OFFICES.

SEE OTHER SIDE FOR TELEGRAM

THE WESTERN UNION TELEGRAPH COMPANY.

INCORPORATED

3,000 OFFICES IN AMERICA. CABLE SERVICE TO ALL THE WORLD.

This Company TRANSMITS and DELIVERS messages only on conditions limiting its liability, which have been assented to by the sender of the following message. Errors can be guarded against only by repeating a message back to the sending station for comparison, and the Company will not hold itself liable for errors or delays in transmission or delivery of **Unrepeated Messages**, beyond the amount of tolls paid thereon, nor in any case where the claim is not presented in writing within sixty days after the message is filed with the Company for transmission.

This is an **UNREPEATED MESSAGE**, and is delivered by request of the sender, under the conditions named above.

ROBERT C. CLOWRY, President and General Manager.

NUMBER	SENT BY	REC'D BY	CHECK
2116.		R. G. V.	

10.57

RECEIVED at

Old Post Office Dept. Bldg
Cor. 7th & F Sts. N.W.

Dec 17th 1910

Dated

Harrisburg Pa. 17.

To

Hon. R. G. Valentine.



Comr of Indian Affs.
Wash D C.

750
Was called away from Wash
before Learning action of
Senate Committee kindly
wire what appropriation was made

SEE OTHER SIDE FOR TELEGRAM

The Western Union Telegraph Company

THE LARGEST TELEGRAPHIC
SYSTEM IN THE WORLD.

OVER ONE MILLION MILES
OF WIRE IN THE UNITED STATES
AND CANADA.

It has over 24,000 Telegraph
Offices, including Branch Offices.

It has also Direct Connection
by Telegraph or Telephone with as
many more remote and smaller
stations, making a total list of
over 50,000 in the United States,
Canada and Mexico, and this num-
ber is rapidly increasing.

Seven Atlantic Cables,

Connecting North America with all points
in Europe and beyond, including Two
Cables of the American Telegraph and
Cable Company, Four Cables of the Anglo-
American Telegraph Company, and One
Cable of the Direct United States Cable Co.

Direct Wires to Galveston, Texas, con-
necting at that place with the Cables of the
Mexican, the Central and South American
Telegraph Companies for all points in
Mexico and Central and South America.

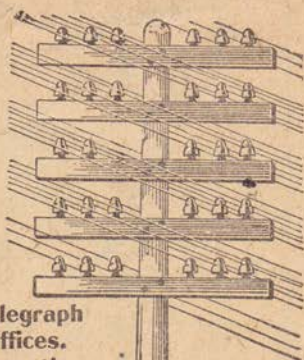
Direct Wires and Cables to Havana,
Cuba, connecting at that place with the
Cuba Submarine and West India and Pan-
ama Telegraph Companies for all points
in the West Indies.

Connects at San Francisco with Pacific
Cables to the Sandwich Islands, Honolulu,
Guam, the Philippines, China, Japan, etc.,
and at Victoria, B. C., with Pacific Cable
to Australia and New Zealand.

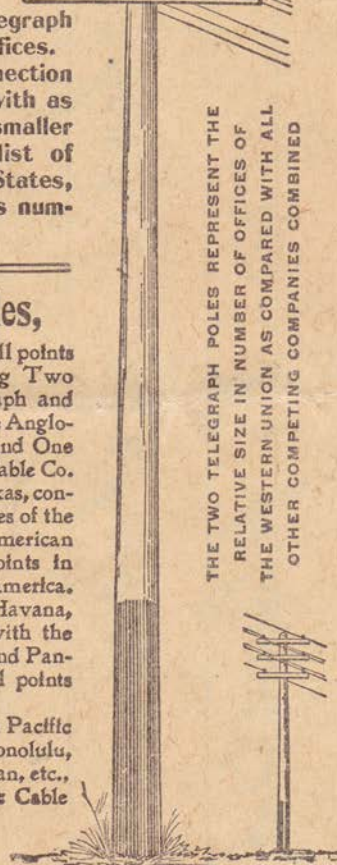
Connects at Seattle, Wash.,
with U. S. Government Lines
and Cables to and in Alaska.

Exclusive connection with the Great
North-Western Telegraph Co. of Canada.

Domestic and Foreign Money Orders by Telegraph and Cable



THE TWO TELEGRAPH POLES REPRESENT THE
RELATIVE SIZE IN NUMBER OF OFFICES OF
THE WESTERN UNION AS COMPARED WITH ALL
OTHER COMPETING COMPANIES COMBINED



W. U. T. CO.
24,634
OFFICES.

OTHER COB.
4,868
OFFICES.

SEE OTHER SIDE FOR TELEGRAM

THE WESTERN UNION TELEGRAPH COMPANY.

INCORPORATED

20,000 OFFICES IN AMERICA. CABLE SERVICE TO ALL THE WORLD.

This Company TRANSMITS and DELIVERS messages only on conditions limiting its liability, which have been assented to by the sender of the following message. Errors can be guarded against only by repeating a message back to the sending station for comparison, and the Company will not hold itself liable for errors or delays in transmission or delivery of Unrepeated Messages, beyond the amount of tolls paid thereon, nor in any case where the claim is not presented in writing within sixty days after the message is filed with the Company for transmission.

This is an UNREPEATED MESSAGE, and is delivered by request of the sender, under the conditions named above.

ROBERT C. CLOWRY, President and General Manager.

NUMBER	SENT BY	REC'D BY	CHECK
21		(R)	

RECEIVED at

Dec 17 1900

Dated

To

for Carlisle Indian school

M. E. Olmsted.