

3 incls.

JRW-S

Superintendent,

Major 11th Cavalry,

M. A. Mercer

Very respectfully,

the front and the rear, but somewhat more towards the front.

to be 12 inches. The ground slopes from the center high towards the elevations at the several corners varying perhaps not to exceed that the ground on which the hospital will be placed is nearly level, these will furnish the information desired, though it may be added excavations, all showing the present conditions. It is thought that the superintendent of industries, accompanied by a sketch of the inclose herewith a copy of a report, dated the 18th instant, from Ground plans and specifications for the new hospital, I have to from the Acting Commissioner of Indian Affairs, in regard to the Answering Office letter "Education", dated the 18th instant,

SIR:

Washington, D. C.

The Commissioner of Indian Affairs,
The Honorable,

1906

OFFICE OF
Indian Affairs
Rec. JUL 21

62177

8/17

Indian School, Carlisle, Pa,
July 20, 1906.

Maj. W. A. Mercer,
Supt.

Transmits letter of Supt. of
Industries and sketch relative to
ground on which new hospital is
to be erected.

2 incls.

July 20, 1906.

File

E File

MAJOR W. A. MERCER, 11TH CAVALRY
SUPERINTENDENT

JOHN R. WISE
ASSISTANT SUPERINTENDENT

W. G. THOMPSON
SUPERINTENDENT OF INDUSTRIES

DEPARTMENT OF THE INTERIOR,
INDIAN INDUSTRIAL SCHOOL,
OFFICE OF SUPERINTENDENT.

CARLISLE PA.

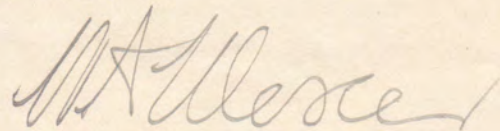
July 20, 1906.

The Honorable,
The Commissioner of Indian Affairs,
Washington, D. C.

Sir:

Answering Office letter "Education", dated the 16th instant, from the Acting Commissioner of Indian Affairs, in regard to the ground plans and specifications for the new hospital, I have to inclose herewith a copy of a report, dated the 18th instant, from the superintendent of industries, accompanied by a sketch of the excavations, all showing the present conditions. It is thought that these will furnish the information desired, though it may be added that the ground on which the hospital will be placed is nearly level, the elevations at the several corners varying perhaps not to exceed 10 or 12 inches. The ground slopes from the center both towards the front and the rear, but somewhat more towards the front.

Very respectfully,



Major 11th Cavalry,

Superintendent.

JRW-S

2 incls.

1/23.

SUBJECT: INDIAN OFFICE.

Very respectfully,

the present condition of the excavations is herewith given.
An outline and measurements as accurately as we can get them from
the excavation for the trenches for footings were not made.
has a depth of 8 feet in the rear and 7 feet in front.

edges of the cellar excavation. The excavation for the cellar
feet of the surface. Very little settling-in has occurred with the
covered in and all but the cellar are filled to within about two (2)

During the past winter the edges of these excavations have
which were, I believe, returned to the Indian Office.

was done in accordance with the plans then in our possession and
desired. About a year ago all the excavating (the site excepted)

Indian Office, it is impossible to give the data as full as
With reference to the industries in letter "Excavation" July

Indian Office,

62177

Sir:
Major W. A. Mercer,
Superintendent.

CARLEISLE, PA. July 18, 1906.

INDIAN INDUSTRIAL SCHOOL
UNITED STATES INDIAN SERVICE
DEPARTMENT OF THE INTERIOR

JOHN R. WISE

W. G. THOMPSON

DEPARTMENT OF THE INTERIOR
UNITED STATES INDIAN SERVICE
INDIAN INDUSTRIAL SCHOOL
CARLISLE, PA. July 18, 1906.

Major W. A. Mercer,
Superintendent.

Sir:-

With reference to the inquiries in letter "Education" July 16th. Indian Office, it is impossible to give the data as full as desired. About a year ago all the excavating (the area excepted) was done in accordance with the plans then in our possession and which were, I believe, returned to the Indian Office.

During the past winter the sides of these excavations have caved in and all but the cellar are filled to within about two (2) feet of the surface. Very little caving-in has occurred with the sides of the cellar excavation. The excavation for the cellar has a depth of 8 feet in the rear and 7 feet in front.

The excavation for the trenches for footings were not made. An outline and measurements as accurately as we can get them from the present condition of the excavations is herewith given.

Very respectfully,

W. G. Thompson

Supt. of Industries.

T/GB.

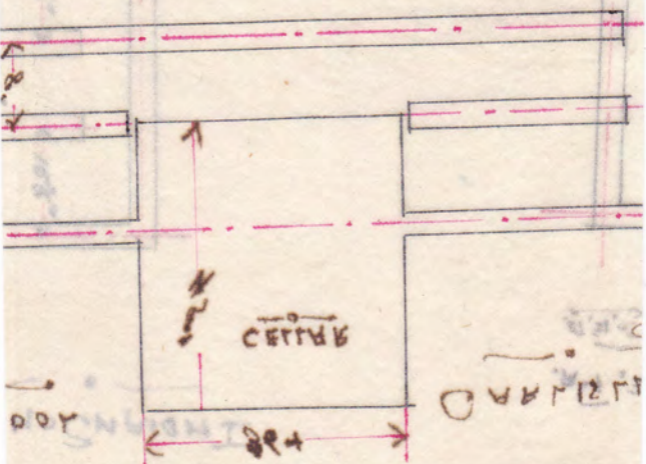
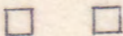
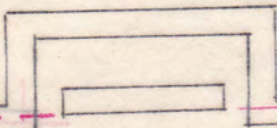
62177

Indian Office,

Incl. No.

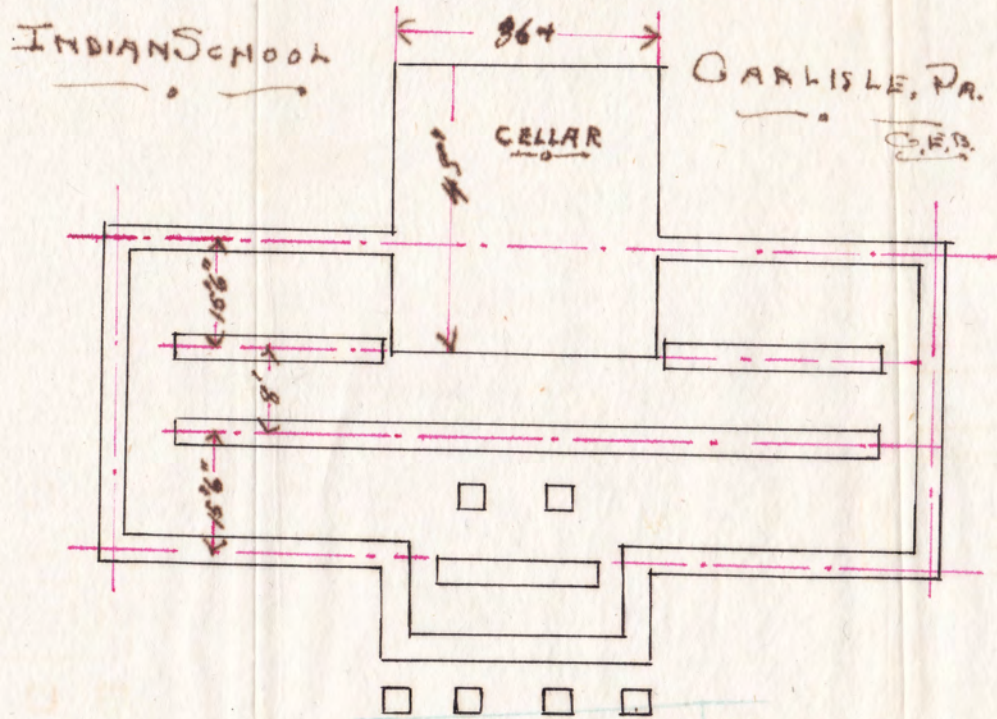
2

1906



МАЛО ПЛАНОВИТИ БЛОК

NEW HOSPITAL PLAN.



INDIAN SCHOOL

CARLISLE, PA.
C.E.B.

CELLAR

estss
national office
1901